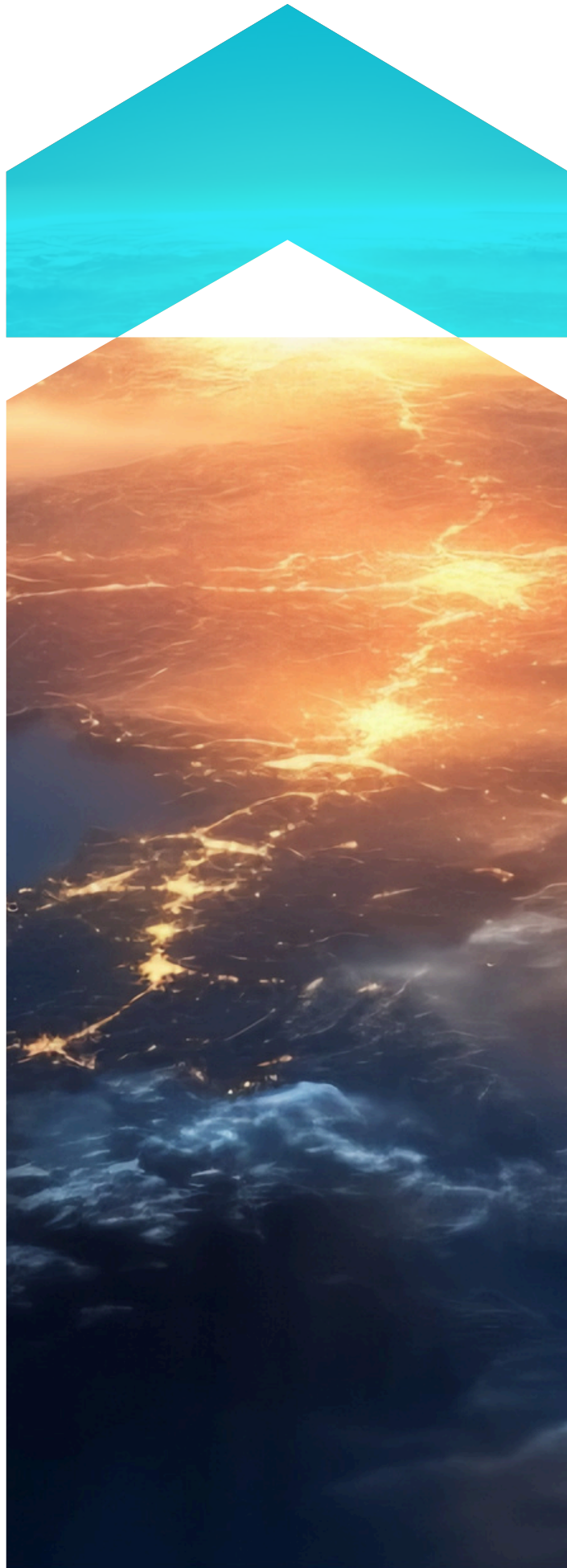


# GIB Global Solutions

**One Continent.  
Every Direction.  
Endless Possibilities.**

[gib.co.za](http://gib.co.za)



# Introduction

GIB are proud to be a partner to various international networks, allowing us to bolster our capabilities not only from a South African context, but from a global one.

GIB also proudly manage an African Broker network, The GIB Africa Alliance. This network was founded in 2013 to address the need for a facilitator from an African territory perspective. Since its inception the network has grown to include 40 partners across the continent. In order to ensure a consistent approach to addressing our clients needs the network is managed directly from GIB's head office in Johannesburg.

Through this approach we aim to simplify the process and ensure that our clients global and local policies are aligned in an efficient and compliant manner.

# GIB's strong track record



A leading Independent insurance brokers in South Africa, established in 1982



Thirteen specialist divisions catering to all industries



A mix of both accomplished and aspiring talent



A client focused return to service culture with the client at the center of every part of our strategy



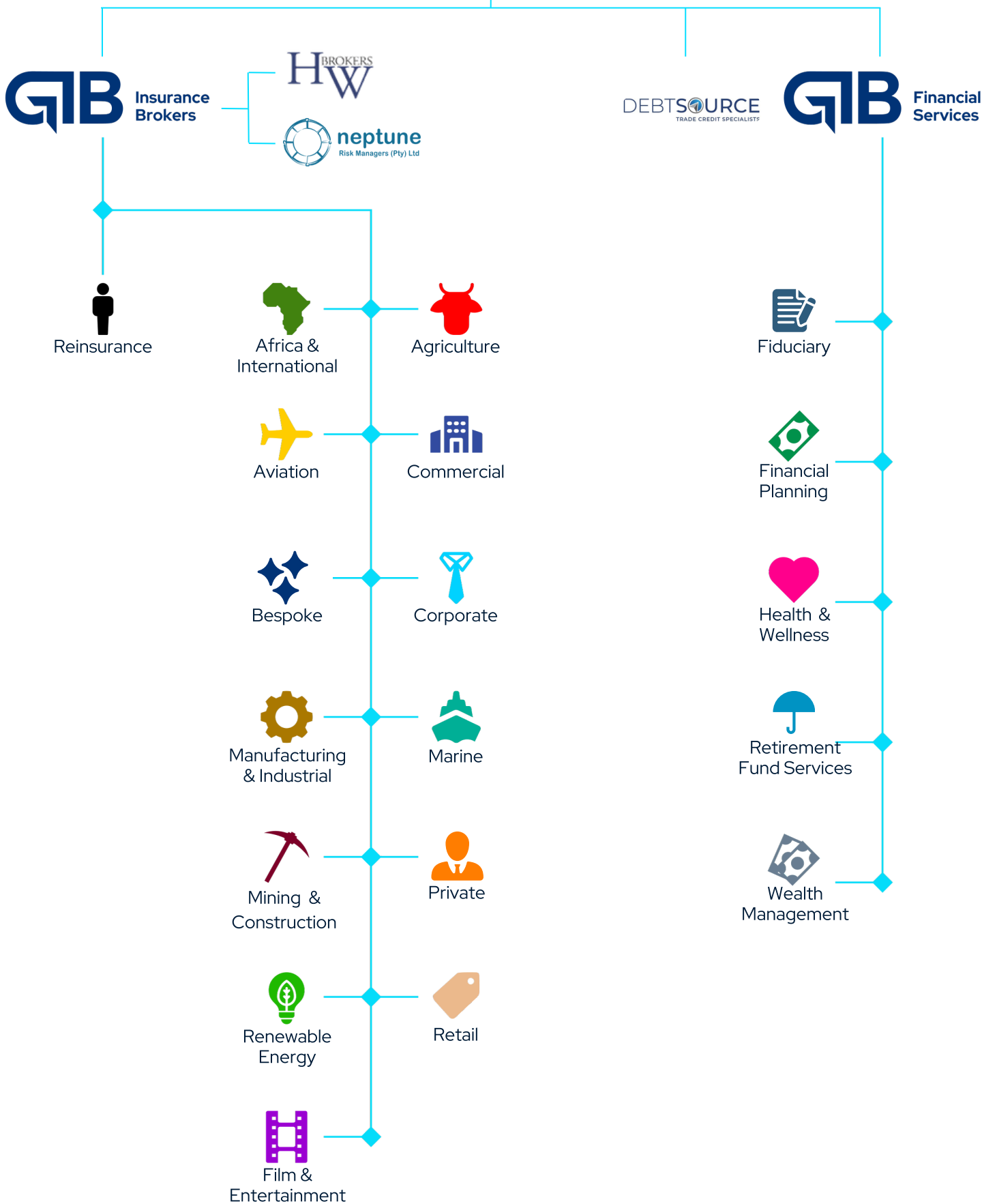
A systematic client service methodology, with a successful client retention history



Level 1 B-BBEE rating



We have a balance between local support & global reach, made possible by our global partnerships



# Why GIB Africa Alliance

The GIB Africa Alliance caters for situations, where our clients need local knowledge and expertise in African countries.

- › Independent Brokers
- › Like-minded approach
- › Local Experts in their territories and fields
- › Access to support throughout Africa
- › Experience in handling International Programs

GIB Insurance Brokers are well positioned to assist as the facilitator hub when handling African placements, which insure that the programmes are aligned with and consistent across the continent.





# The compliance factor

Each African country operates according to their own legislation and compliance guidelines. These differences need to be understood to ensure that the complexity of the differences are addressed to the satisfaction of the client, always taking cognisance of the regulatory framework that is legally required. Each partner is well aware of the complexities and are there to assist and guide the client through the process in an efficient and orderly manner. By using in-country brokers who have detailed knowledge of the requirements, we ensure that the process is as effective as possible.

Unlike owned networks which are usually rigid in their requirements and centralized from the USA, GIB Africa Alliance has the capability to adapt to our customers needs, to ensure a well-coordinated and streamlined solution.

# GIB Group Global Partnerships

The GIB Africa Alliance was established in 2013, creating partnerships in over 40 countries across Africa

GIB is a fully tribunalised Broker at Lloyd's which is the world's largest insurance corporation

GIB was appointed by Funk Gruppe of Germany and Verspieren International of France to be its associates in Africa

GIB is a partner in South Africa to Unison Brokers



GIB appointed as a network partner by JiangTai, and AJ Gallagher the world's 3rd largest broker

GIB is a shareholder and one of the appointed South African partners of the Assurex Global Group

## Global Networks:

unisonBrokers®



## Global Alliances:



# GIB International contact details



## **Silke Prinsloo**

Senior Client Executive | GIB International  
silke@gib.co.za



## **Alain Nathan**

Divisional Executive | GIB International  
julia@gib.co.za



## **Mark Sanders**

COO | GIB Insurance Brokers  
mark@gib.co.za



## **Tracy McLaughlin**

Regional Managing Director | GIB Coastal  
tracym@gib.co.za



## **Jurie Erwee**

CEO | GIB Group  
jurie@gib.co.za



## **Tshepo Mtlala**

Internal Broker  
tshepo@gib.co.za



## **Glenn Gamsy**

Managing Director | GIB Financial Services  
glenn@gib.co.za



## **Liz Botes**

Operations Director | GIB Financial Services  
liz@gib.co.za

### **Johannesburg**

GIB House, 35 Fricker Road, Illovo, 2196 011 483 1212

### **Cape Town**

3rd Floor, DBM Building, Golf Park, 80 Raapenburg Road, Pinelands  
021 670 2448

### **Gqeberha**

Bloomingdales Lifestyle Village, 145 Main Road Walmer  
079 952 8307

### **KwaZulu-Natal**

Suite 6 Rydall Views, Rydall Vale Office Park, La Lucia, 4051  
031 566 3834

**info@gib.co.za**  
**gib.co.za**

The information contained in this publication should not be taken as advice regarding any individual situation and should not be relied upon as such. Please consult your insurance advisors regarding specific coverage issues.  
©Copyright GIB Group of Companies. All rights reserved.

**GIB Insurance Brokers (Pty) Ltd is an authorised financial services provider, No. 10406**