

Economies at a Glance
February 2026

Forecast 2026:
GDP: **2.6%**
Core PCE Inflation: **2.8%**
Forecast 2027:
GDP: **2.1%**
Core PCE Inflation: **2.3%**

EUROZONE

Europe’s response to the US Supreme Court ruling on IEEPA tariffs remains cautious but assertive. Brussels has paused ratification of a recent trade agreement between the European Union and the US and is demanding “full clarity” from Washington on its tariff authority, warning that unpredictability in US tariff policy undermines a stable transatlantic framework. In the real economy, the Eurozone’s private sector showed renewed vigour in February with the flash composite purchasing managers’ index (measuring services and manufacturing confidence) climbing to 51.9, registering the 14th consecutive month of expansion, led by a pick-up in Germany. German business sentiment also improved, with the ifo Business Climate Index rising to 88.6, signalling a tentative recovery. France, by contrast, remains near stagnation, underscoring regional differences. Trade uncertainties and uneven growth temper optimism as policymakers weigh risks to investment and inflation.

Forecast 2026:
GDP: **1.1%**
Inflation: **2.3%**
Forecast 2027:
GDP: **1.4%**
Inflation: **2.1%**

JAPAN

Japan’s earlier accord, capping duties at 15% in exchange for US\$550 billion of investment in America, remains intact. Officials insist commitments will be honoured, though firms must decipher procedural changes and the residual risk of renewed protectionism. At home, Prime Minister Sanae Takaichi has consolidated her authority. The Liberal Democratic Party, together with its coalition partner, the Japan Innovation Party, captured 352 seats in the election on 8 February, delivering a supermajority and smoothing the path for defense reforms and fiscal support. In a Diet address on 20 February, she reaffirmed plans for proactive spending to strengthen resilience and competitiveness. Economic activity remains pedestrian, however. Fourth-quarter GDP grew at a 0.2% annualised pace, narrowly avoiding contraction, while January inflation slipped to a two-year low, easing pressure on households but complicating the central bank’s normalisation plans.

UNITED STATES

A six-to-three Supreme Court decision on 20 February held that the International Emergency Economic Powers Act (IEEPA) does not authorise presidents to impose tariffs. This ruling invalidated United States (US) President Donald Trump’s emergency levies, potentially opening the door for up to US\$175 billion in tariff refunds to importers, according to estimates by the Penn-Wharton Budget Model. In response, the administration has pivoted to a 15% global surcharge (adjusted upward from an initial 10%) under Section 122 of the Trade Act. However, sustaining protectionist pressure faces significant legal and procedural hurdles, as this rate is legally permitted to remain in effect for only 150 days, starting 24 February. Global Trade Alert calculates that the new effective trade-weighted tariff rate has dropped to 13.2%, down from 15.3% before the ruling. Regarding the real economy, growth slowed sharply to an annualised 1.4% in the fourth quarter of 2025, missing the 3% consensus expectation. Following the shutdown, federal spending saw its steepest decline since 1972.

Forecast 2026:
GDP: **1.2%**
HICP Inflation: **1.8%**
Forecast 2027:
GDP: **1.4%**
HICP Inflation: **1.9%**

UNITED KINGDOM

Britain’s trade relationship with the US faces renewed uncertainty. Questions have arisen over how the 15% interacts with the previously negotiated 10% preferential ceiling under the Economic Prosperity Deal between the United Kingdom (UK) and the US. The UK has signalled it does not expect the agreement to unravel, particularly in sensitive sectors such as steel and autos, but officials stress that “nothing is off the table” should the new measures erode negotiated terms. For exporters, the problem is policy opacity. The economic implications are manageable but not trivial. The US absorbs roughly 15% of UK goods exports. As such, any effective tariff creep would squeeze margins in autos, pharmaceuticals and machinery, dampen investment intentions and weigh modestly on 2026 growth. A stronger dollar offers some currency cushion, but prolonged trade uncertainty could shave a few tenths off UK GDP if business confidence falters. Politically, Prime Minister Keir Starmer’s net approval remains near negative 47 (YouGov), leaving limited room for missteps.

Forecast 2026:
GDP: **0.9%**
Inflation: **1.8%**
Forecast 2027:
GDP: **0.9%**
Inflation: **2.0%**



CHINA

Forecast 2026:
GDP: **4.6%**
Inflation: **0.5%**
Forecast 2027:
GDP: **4.5%**
Inflation: **0.8%**

Beijing will view the February ruling by the US Supreme Court as a tactical reprieve in a long economic duel. By striking down tariffs imposed under the IEEPA, the court dismantled a central plank of unilateral American trade pressure. Average US duties on Chinese goods are set to fall from roughly 36% to about 27%, as a flat 15% Section 122 levy replaces steeper, country-specific rates. Fentanyl-related tariffs, which are an additional 10% imposed across the board since February 2025, have also been invalidated, trimming costs for exporters and restoring some price competitiveness. China is wasting little time in capitalising on the optics. Officials are casting the judgment as vindication of their claim that Washington strayed beyond legal bounds, while courting middle powers as a supposed champion of rules-based commerce. Nevertheless, the reprieve is partially countered by the fact that product-specific tariffs on steel, aluminium, semiconductors and pharmaceuticals remain firmly in place.

EMERGING MARKETS

The US Supreme Court decision pared back a layer of trade uncertainty that had clouded manufacturing hubs globally. Average US duties on Indian goods, including a rate above 20% on some engineering products and textiles, are expected to drift toward the mid-teens under the new 15% Section 122 levy. Brazil is likely to benefit the most, with effective rates falling from roughly 22% to 16%, lending support to steel, iron ore and agricultural exports, though sector-specific tariffs remain in force. Mexico, meanwhile, will gain from the removal of fentanyl-linked surcharges, aiding autos and electronics, even as North American Free Trade Agreement carve-outs face scrutiny. Indonesia and Turkey are in the meantime positioning for second-round effects. Indonesia hopes to capture incremental orders in apparel, footwear and nickel processing as multinationals diversify supply chains beyond China. Turkey, already a hub for white goods and automotive components entering Europe and America, is pitching itself as a near-shore alternative, though both remain exposed to lingering sector-specific US tariffs on metals.

Forecast 2026:
GDP: **1.6%**
Inflation: **3.2%**
Forecast 2027:
GDP: **1.9%**
Inflation: **3.2%**

Forecast 2026:
GDP: **4.3%**
Inflation: **2.6%**
Forecast 2027:
GDP: **4.2%**
Inflation: **2.7%**

SOUTH AFRICA

South Africa's (SA) 2026 national budget leaned on an unexpected revenue dividend to buffer infrastructure spending. Treasury now expects a gross tax revenue windfall of R21.3 billion in the current fiscal year, reflecting stronger-than-anticipated corporate and value-added tax receipts and improved compliance in collections. Rather than financing new permanent recurrent spending, much of the upside was directed toward expenditure on critical infrastructure, particularly in water and transport. Treasury's growth assumptions remained cautious. Real GDP is projected to edge higher to 1.8% by the end of the medium-term expenditure framework (MTEF), supported by firming household spending, easing energy constraints and some improvement in external demand, though structural bottlenecks continue to cap potential output. Treasury expects inflation to stabilise closer to 3.2% by the end of the MTEF, allowing modest relief on debt-servicing costs. The consolidated budget deficit is expected to narrow to 3.1% of GDP by fiscal year 2028/29, with the primary balance remaining in surplus, and public debt projected to stabilise at 78.9% of GDP in the current fiscal year, before edging lower later in the forecast horizon. Credit rating agencies are likely to take note of the improved revenue trajectory and a clearer fiscal deficit path. We expect Fitch and Moody's to follow S&P Global Rating's November 2025 upgrade to SA's sovereign rating in due course. However, investment-grade status remains distant without stronger growth and structural reform to contain persistent expenditure pressures and high debt-service costs.



Indices summary for February 2026

Indices	One Month	Three Month	One Year	Three Years	Four Years	Five Years	Six Years	Seven Years	Ten Years
S.A. equity indices									
FTSE/JSE All-Share Index (ALSI)	7.01%	16.06%	54.49%	22.52%	18.23%	18.68%	20.98%	16.75%	13.85%
FTSE/JSE All Share Top 40 Index	7.19%	16.71%	57.86%	22.83%	18.61%	18.90%	21.62%	17.46%	14.31%
FTSE/JSE Mid Cap Index	5.38%	17.05%	51.93%	21.47%	17.01%	18.10%	16.24%	12.63%	10.45%
FTSE/JSE Small Cap Index	5.27%	8.92%	38.68%	23.62%	20.54%	24.24%	25.24%	18.13%	12.66%
FTSE/JSE Resources Index	13.32%	34.77%	166.69%	35.65%	20.31%	23.24%	29.59%	24.41%	23.79%
FTSE/JSE Financials Index	7.15%	17.21%	43.10%	24.85%	20.44%	23.00%	17.94%	12.20%	10.96%
FTSE/JSE Industrials Index	0.09%	-1.46%	10.42%	11.25%	13.73%	11.61%	14.70%	12.23%	8.83%
FTSE/JSE Research Affiliates Fundamental Indices 40 Index (RAFI)	7.35%	22.13%	75.55%	23.86%	19.82%	23.19%	23.45%	17.73%	16.01%
FTSE/JSE Research Affiliates Fundamental Indices All Share Index	6.84%	20.98%	69.03%	23.43%	19.29%	22.27%	22.75%	17.17%	15.58%
FTSE/JSE SA Listed Property Index (SAPY)	6.29%	7.43%	43.91%	26.52%	20.78%	21.11%	14.00%	8.55%	5.78%
FTSE/JSE All Property Index (ALPI)	6.63%	7.91%	44.70%	26.85%	20.45%	20.92%	13.82%	7.97%	4.60%
S.A. interest-bearing indices									
FTSE/JSE All Bond Index (ALBI)	1.74%	6.53%	28.21%	17.53%	14.24%	13.18%	12.35%	11.85%	11.47%
FTSE/JSE All Bond Index 1-3 years (ALBI)	0.59%	2.29%	10.09%	9.64%	8.82%	8.13%	8.28%	8.27%	8.58%
FTSE/JSE Inflation-Linked Government Index	3.59%	7.93%	20.60%	12.07%	9.63%	10.15%	9.73%	8.52%	6.81%
Short-term Fixed Interest Composite Index (SteFI)	0.51%	1.67%	7.36%	8.00%	7.42%	6.70%	6.39%	6.51%	6.79%
Commodities									
NewGold Exchange-Traded Fund	2.72%	16.14%	58.79%	35.30%	29.31%	25.72%	21.70%	23.66%	15.16%
Gold price (in rands)	4.61%	15.84%	58.02%	35.54%	29.74%	26.05%	22.04%	23.98%	15.48%
Platinum Exchange-Traded Fund	2.06%	29.90%	114.84%	28.49%	22.69%	15.56%	18.07%	16.95%	9.45%
Platinum price (in rands)	10.44%	31.94%	115.03%	29.27%	22.60%	14.75%	17.70%	16.92%	9.50%
Currency movements									
Rand/euro movements	-0.98%	-4.77%	-2.05%	-1.17%	2.13%	0.71%	1.58%	2.37%	0.95%
Rand/dollar movements	-0.18%	-6.53%	-13.59%	-4.51%	0.85%	1.24%	0.35%	1.84%	0.12%
S.A. inflation index									
Consumer Price Index (CPI)			3.49%	4.01%	4.72%	4.92%	4.62%	4.60%	4.72%
Global indices									
MSCI World Index (All Countries)	0.77%	-0.83%	8.28%	15.25%	13.72%	12.81%	15.05%	15.05%	12.84%
MSCI Developed Markets Index	0.55%	-2.96%	4.85%	15.14%	13.86%	13.86%	15.52%	15.65%	13.42%
MSCI Emerging Markets Index	4.04%	10.85%	27.16%	16.12%	12.12%	7.04%	10.80%	10.80%	10.88%
Global Property Research (GPR) 250 REIT Index	4.69%	-7.47%	-15.80%	-0.59%	4.83%	8.60%	5.93%	9.02%	6.08%
MSCI Africa Index	8.47%	18.61%	60.41%	21.61%	14.32%	13.22%	13.84%	10.39%	8.01%
FTSE World Government Bond Index	0.65%	-4.55%	-6.82%	-0.73%	-0.39%	-1.26%	-0.99%	1.66%	0.46%
Three-month US dollar LIBOR rate	0.09%	-5.68%	-10.09%	0.02%	4.97%	4.56%	3.14%	4.59%	2.35%
ICE LIBOR 1 Month USD ZAR converted	0.09%	-5.68%	-10.09%	0.17%	5.23%	4.60%	3.21%	4.73%	2.51%
FTSE EPRA/NAREIT Developed Index	6.55%	2.38%	1.50%	3.47%	2.87%	5.37%	3.58%	5.42%	4.63%

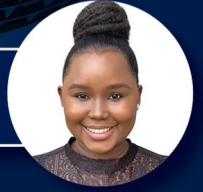
- Note:**
- Source: Momentum Multi-Manager, IRESS, www.msci.com, www.yieldbook.com, www.ft.com.
 - Returns for periods exceeding one year are annualised.
 - The return for the Consumer Price Index (CPI) is to the end of the previous month. Due to the reweighting of the CPI from January 2009, this number reflects a compound of month-on-month CPI returns.
The historical numbers used are the official month-on-month numbers based on a composite of the previous inflation series (calculations before January 2009) and the revised inflation series (calculations after January 2009).
 - The MSCI World Index (All countries) returns are adjusted to correspond with global investment prices received.
 - FTSE/JSE disclaimer: www.jse.co.za.
 - The information reproduced in this document has been compiled by or arrived at by investments from sources believed to be reliable.
 - Reasonable steps have been taken to ensure the validity and accuracy of the information in this document. However, Momentum Multi-Manager does not accept any responsibility for any claim, damages, loss or expenses, howsoever arising out of or in connection with the information in this document, whether by a client, investor or intermediary.
 - The content used in this document is sourced from various media publications, the internet and Momentum Investments. For more information, please visit us at www.momentum.co.za/business.
 - Momentum Investments is part of Momentum Metropolitan Life Limited, an authorized financial services and registered credit provider, and rated B-BBEE Level 1.

The macro research desk

Sanisha Packirisamy
Chief Economist



Tshiamo Masike
Economist



The information used to prepare this document includes information from third-party sources and is for information purposes only. Although reasonable steps have been taken to ensure the validity and accuracy of the information contained herein, Momentum Metropolitan Life Limited does not guarantee the accuracy, content, completeness, legality or reliability of the information contained herein and no warranties and/or representations of any kind, expressed or implied, are given to the nature, standard, accuracy or otherwise of the information provided.

Neither Momentum Metropolitan Life Limited, its affiliates, directors, officers, employees, representatives or agents (the Momentum Parties) have any liability to any persons or entities receiving the information made available herein for any claim, damages, loss or expense, including, without limitation, any direct, indirect, special, incidental, punitive or consequential cost, loss or damages, whether in contract or in delict, arising out of or in connection with information made available herein and you agree to indemnify the Momentum Parties accordingly. For further information, please visit us at momentum.co.za. Momentum Multi-Manager is part of Momentum Metropolitan Life Limited, an authorised financial services and registered credit provider, and rated B-BBEE level 1.